

Current Biology

Cortical Response to the Natural Speech Envelope Correlates with Neuroimaging Evidence of Cognition in Severe Brain Injury

Highlights

- Latencies of the EEG response to the natural speech envelope were measured
- Patients with disorders of consciousness showed progressive slowing of latencies
- Patients capable of performing fMRI mental imagery tasks showed normal latencies
- EEG speech envelope responses may help to identify cognitive motor dissociation

Authors

Chananel Braiman,
Esteban A. Fridman, Mary M. Conte,
Henning U. Voss,
Chagit S. Reichenbach,
Tobias Reichenbach, Nicholas D. Schiff

Correspondence

nds2001@med.cornell.edu

In Brief

Braiman et al. measure simultaneous EEG responses to the natural speech envelope in healthy controls and severely brain-injured patients. Latencies of EEG speech envelope responses stratify patients and identify a subgroup of patients capable of carrying out fMRI mental imagery tasks with latencies indistinguishable from those obtained in controls.



Cortical Response to the Natural Speech Envelope Correlates with Neuroimaging Evidence of Cognition in Severe Brain Injury

Chananel Braiman,¹ Esteban A. Fridman,³ Mary M. Conte,³ Henning U. Voss,⁴ Chagit S. Reichenbach,^{1,2} Tobias Reichenbach,⁵ and Nicholas D. Schiff^{3,6,7,*}

¹Tri-Institutional Training Program in Computational Biology and Medicine, Weill Cornell Medical College, New York, NY 10065, USA

²Howard Hughes Medical Institute and Laboratory of Sensory Neuroscience, The Rockefeller University, New York, NY 10065, USA

³Feil Family Brain and Mind Research Institute, Department of Neurology, Weill Cornell Medical College, New York, NY 10065, USA

⁴Citigroup Biomedical Imaging Center, Department of Radiology, Weill Cornell Medical College, New York, NY 10065, USA

⁵Department of Bioengineering, Imperial College London, South Kensington Campus, London SW7 2AZ, UK

⁶The Rockefeller University Hospital, Rockefeller University, New York, NY 10065 USA

⁷Lead Contact

*Correspondence: nds2001@med.cornell.edu

<https://doi.org/10.1016/j.cub.2018.10.057>

SUMMARY

Recent studies identify severely brain-injured patients with limited or no behavioral responses who successfully perform functional magnetic resonance imaging (fMRI) or electroencephalogram (EEG) mental imagery tasks [1–5]. Such tasks are cognitively demanding [1]; accordingly, recent studies support that fMRI command following in brain-injured patients associates with preserved cerebral metabolism and preserved sleep-wake EEG [5, 6]. We investigated the use of an EEG response that tracks the natural speech envelope (NSE) of spoken language [7–22] in healthy controls and brain-injured patients (vegetative state to emergence from minimally conscious state). As audition is typically preserved after brain injury, auditory paradigms may be preferred in searching for covert cognitive function [23–25]. NSE measures are obtained by cross-correlating EEG with the NSE. We compared NSE latencies and amplitudes with and without consideration of fMRI assessments. NSE latencies showed significant and progressive delay across diagnostic categories. Patients who could carry out fMRI-based mental imagery tasks showed no statistically significant difference in NSE latencies relative to healthy controls; this subgroup included patients without behavioral command following. The NSE may stratify patients with severe brain injuries and identify those patients demonstrating “cognitive motor dissociation” (CMD) [26] who show only covert evidence of command following utilizing neuroimaging or electrophysiological methods that demand high levels of cognitive function. Thus, the NSE is a passive measure that may provide a useful screening tool to improve detection of covert cognition with fMRI or

other methods and improve stratification of patients with disorders of consciousness in research studies.

RESULTS

Neuronal Representation of the Natural Speech Envelope in Healthy Controls

The grand average natural speech envelope (NSE)-electroencephalogram (EEG) cross-correlation function for healthy controls is shown in Figure 1. The latency of the greatest correlation magnitudes occurred at approximately 90 ms and 200 ms; similar results were attained in previous studies investigating the neuronal tracking of the amplitude envelope of natural continuous speech [7–13, 15]. The neuronal response to the NSE was largest over the bilateral posterior temporal channels and the anterior left central channels.

NSE Response in Relation to the Behavioral Diagnosis

We investigated the neuronal representation of the NSE across the patient groups and healthy controls. Example traces of the individual average NSE-EEG cross-correlation functions are displayed for five representative subjects in Figure 2. The latencies of the CL1 and CL2 components for each patient group and healthy controls as determined by the behavioral diagnosis are presented in Figure 3A. Latencies of CL1 and CL2 components of the NSE response showed a progressive increase that graded with the severity of the behavioral diagnosis; that is, the earliest NSE responses occurred in the healthy controls, and the most delayed latency responses were observed in the MCS and VS patient groups. Augmenting the behavioral categories with evidence obtained for positive results of functional magnetic resonance imaging (fMRI) command following, a new group emerged with NSE latencies that were not significantly different from those of healthy controls (Figure 3B).

We first performed statistical analysis on the individual averages of the NSE-EEG cross-correlations in patients grouped by behavioral diagnosis without assessment of fMRI command following (Figure 3A). A log transformation was applied prior to



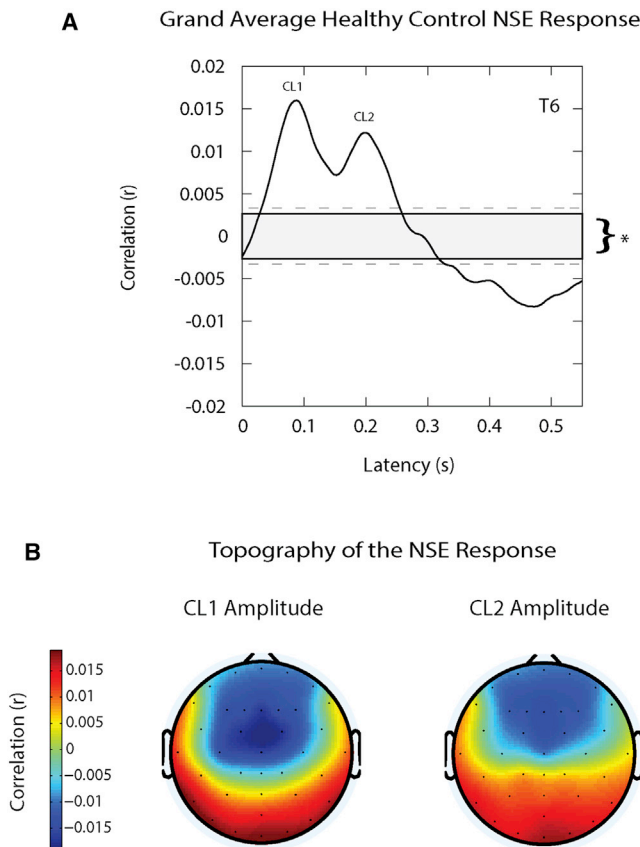


Figure 1. Grand Average NSE Response in Healthy Controls

(A) Plot of the grand average NSE response in healthy controls in a right temporal (T6) channel. The component latency 1 (CL1) and component latency 2 (CL2) peaks of the NSE response and their significance in the cross-correlation functions are labeled above. Cross-correlation values that exceed the dashed lines are significant at $*p \leq 0.05$, false discovery rate (FDR) corrected for the control cross-correlation distribution.

(B) The scalp topography of the amplitude of the CL1 and CL2 NSE peaks. The warmer colors indicate positive correlation values, and the cooler colors indicate negative correlation values.

one-way analysis of variance (ANOVA) of the CL2 component to meet the assumption of homogeneity of variance. As the homogeneity of variance was not met for the CL1 component, Welch's ANOVA and Games-Howell post hoc tests were implemented to test for significant differences of the NSE response components between the patient groups and the healthy controls.

One-way ANOVA revealed a significant group effect on the CL1 and CL2 latencies across the behaviorally defined groups (CL1, $F(3,8,069) = 29.44$; CL2, $F(3,27) = 7.98$; $p < 0.001$ for both). Specifically, the latency of the CL1 and CL2 components was significantly delayed in the VS patients as compared to the healthy controls, EMCS patients, and MCS patients (VS to HC: CL1, $p < 0.01$; CL2, $p < 0.001$; VS to EMCS: CL1, $p < 0.01$; CL2, $p < 0.01$; VS to MCS: CL1, $p < 0.005$; CL2, $p < 0.05$). We did not find any other significant difference in the latency of the CL1 and CL2 components between any of the other groups. The one-way ANOVA did not indicate a significant group effect for the amplitudes of the CL1 and CL2 components ($F = 0.812$, $p = 0.497$; $F = 1.43$, $p = 0.255$; Table S2A).

Statistical analysis was then performed on the individual averages of the NSE-EEG cross-correlations with behavioral categorization reorganized by the removal of patients with positive evidence of fMRI command following as a separate group (Figure 3B). One-way ANOVA revealed a significant group effect on the CL1 latency across the patient groups ($F(4, 29) = 36.79$, $p < 0.001$). Specifically, the latency of the CL1 component was significantly delayed in the EMCS, MCS, and VS patients as compared to the healthy controls (EMCS, $p = 0.034$; MCS, $p < 0.001$; VS, $p < 0.001$). The latency of the CL1 component was significantly prolonged in the MCS and VS patients as compared to the fMRI CF⁺ patients (MCS, $p < 0.001$; VS, $p < 0.001$) and in the VS patients as compared to the EMCS patients ($p < 0.001$) and MCS patients ($p = 0.001$). One-way ANOVA revealed a significant group effect on the CL2 latency ($F(4,26) = 18.66$, $p < 0.001$). Post hoc analysis verified that the CL2 component was significantly delayed in the MCS and VS patients as compared to the healthy controls (MCS, $p < 0.001$; VS, $p < 0.001$) and fMRI CF⁺ patients (MCS, $p = 0.001$; VS, $p < 0.001$) and in the VS patients as compared to the EMCS patients ($p = 0.001$). There was no statistically significant difference in the latencies of the CL1 and CL2 components between the healthy controls and the fMRI CF⁺ patients. We did not find any other significant difference in the latency of the CL1 and CL2 components between any of the other groups. The one-way ANOVA did not indicate a significant group effect on the amplitudes of the CL1 and CL2 components ($F = 1.38$, $p = 0.266$; $F = 1.46$, $p = 0.242$; Table S2B).

The Imaging Characteristics of fMRI CF⁺ Patients

Ten of the brain-injured subjects had statistically significant blood oxygen-level-dependent (BOLD) activation during the active imagery task as compared to the resting state condition. Behavioral examinations with the JFK Coma Recovery Scale—Revised (CRS-R) diagnosed seven of the fMRI CF⁺ patients as MCS and three as EMCS. However, only three of the fMRI CF⁺ patients demonstrated functional communication (Table S3). BOLD activation in the fMRI command-following tasks and representative horizontal, coronal, and sagittal image slices of the 18fluorodeoxyglucose positron emission tomography (¹⁸FDG-PET) resting-state metabolic activity as a qualitative clinical characterization of the patient brain function are displayed in Figure 4 for six representative fMRI CF⁺ patients.

DISCUSSION

Here we find that patients with evidence of fMRI command following show no statistically significant difference in NSE latencies relative to healthy controls. Latencies of both the CL1 and CL2 components, however, showed significant delay for VS and MCS patients when compared with healthy controls and fMRI CF⁺ patients. The EMCS patient group demonstrated variability in their NSE responses, with CL1 latency delayed relative to healthy controls but no significant difference in CL2 latencies from those of fMRI CF⁺ and MCS patients. Importantly, at the group level NSE latency differences showed improved correlation with behavioral evaluations when fMRI CF⁺ patients were removed across categories. Comparison of NSE latencies with separation of groups based only on behavioral diagnosis

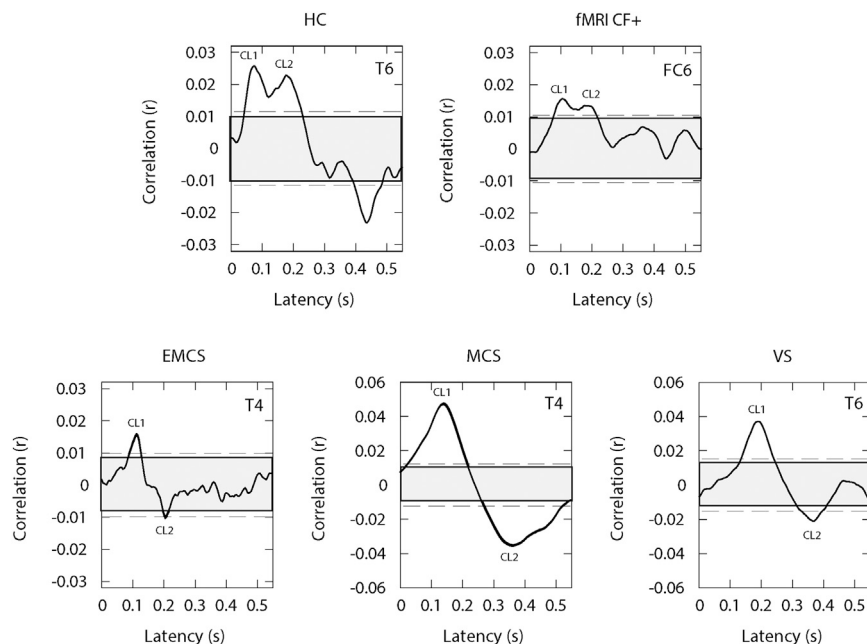


Figure 2. Individual NSE Responses

Plots of representative individual NSE responses for a healthy control, a patient with evidence of command following in the functional magnetic resonance imaging paradigm (fMRI CF⁺), a patient that emerged from the minimally conscious state (EMCS), a minimally conscious state patient (MCS), and a vegetative state patient (VS) across the single best EEG channels (T6, FC6, T4, T4, and T6). The CL1 and CL2 peaks of the NSE response for the individual subjects and their significance in the cross-correlation functions are labeled above. Cross-correlation values that exceed the dashed lines are significant at $*p \leq 0.05$, FDR corrected for the control cross-correlation distribution.

(MMN) event-related potential components correlate with improved clinical outcomes in brain-injured patients [29–34]. In such studies, the subject's own name has been utilized as an emotionally salient and personally meaningful stimulus in the oddball paradigm [25, 35]. These findings emphasize the importance of employing

revealed no significant differences between MCS, EMCS, and healthy subjects for the CL1 or CL2 latencies. This finding may help improve the integrity of future research studies (e.g., preservation of various sleep features across VS, MCS, and EMCS populations or similar inquiries), as fMRI CF⁺ patients with preserved speech processing may retain other unique aspects of preserved cerebral function.

The correspondence of CL1 and CL2 latencies in the fMRI CF⁺ group with those of healthy controls indicates that the NSE response measure may stratify the likelihood that patients harbor unidentified higher-level cognitive function. Additionally, the correspondence of the fMRI CF⁺ group's NSE latencies with those of healthy controls supports evidence from other studies that fMRI command following correlates with preserved cerebral function [6, 27]. As Owen et al. noted in their original reports, successful completion of fMRI mental imagery tasks is highly cognitively demanding; typically, for a full trial of a fMRI mental imagery command-following paradigm, the subject is required to sustain attention to a specific cognitive effort for ~ 30 s at a time and to hold task instructions over eight full repeats [1–3]. The preservation of NSE latencies most likely correlates with a wide preservation of brain networks supporting sustained attention, working memory, and other task-related cognitive processes. Thus, the NSE may be utilized as a screening tool to better allocate the resource of MRI investigations in patients without behavioral command following.

Prior studies have used a range of stimuli to separate diagnostic categories within patients with disorder of consciousness. In a recent report, a subset of patients without behavioral or neuroimaging evidence of command following showed isolated preservation of brain function in neuroimaging paradigms or electrophysiological evidence of cortical processing of language stimuli and a more preserved corticothalamic functional architecture [28]. Event-related potential studies have found that the presence of the P300 and the mismatch negativity

salient and meaningful auditory stimuli to elicit robust neural responses. Signorino et al. found that emotional stimuli that consisted of the patient's name or short phrases spoken by the patient's familial members significantly increased the probability of eliciting the P300 response in brain-injured patients [36]. In another event-related potential study, Holeckova et al. found that speech with familiar speakers significantly enhanced the robustness of the neural response in healthy controls; these studies support the use of emotionally salient and meaningful speech stimuli in the clinical assessment of patients with disorders of consciousness [37]. Perrin et al. utilized the subject's own name in an auditory event-related potential paradigm that assessed the auditory response in brain-injured patients and healthy controls and found that the auditory stimuli elicited a P300 response in MCS patients and in three of five VS patients [25]. This study and others found a progressive slowing of the latency of name-related event-related potentials separated MCS and VS patients from healthy controls and that such latency delays are associated with recovery of consciousness [25, 30, 35, 38–41]. Importantly, no significant differences appeared between locked-in patients as compared to healthy controls.

Graded correlations of bedside behavior with quantitative measurements that do not utilize sensory input have been demonstrated in severely brain-injured patients in a study that combined transcranial magnetic stimulation (TMS) with high-density EEG [42]. A single nominal value termed the perturbational complexity index (PCI) was extracted from the complex waveforms produced in the EEG by the TMS pulse. The authors found that the PCI distinguishes MCS patients from VS. Casarotto et al. [43] further demonstrated that this measure shows a graded shift across the full range of disorder of consciousness (DOC) with a single nominal value as also seen here for the NSE. The relationship of PCI to fMRI⁺ CF is not yet known; while the naturalness and ease of obtaining the NSE measurement improves upon the complexity of the TMS measurement, the PCI

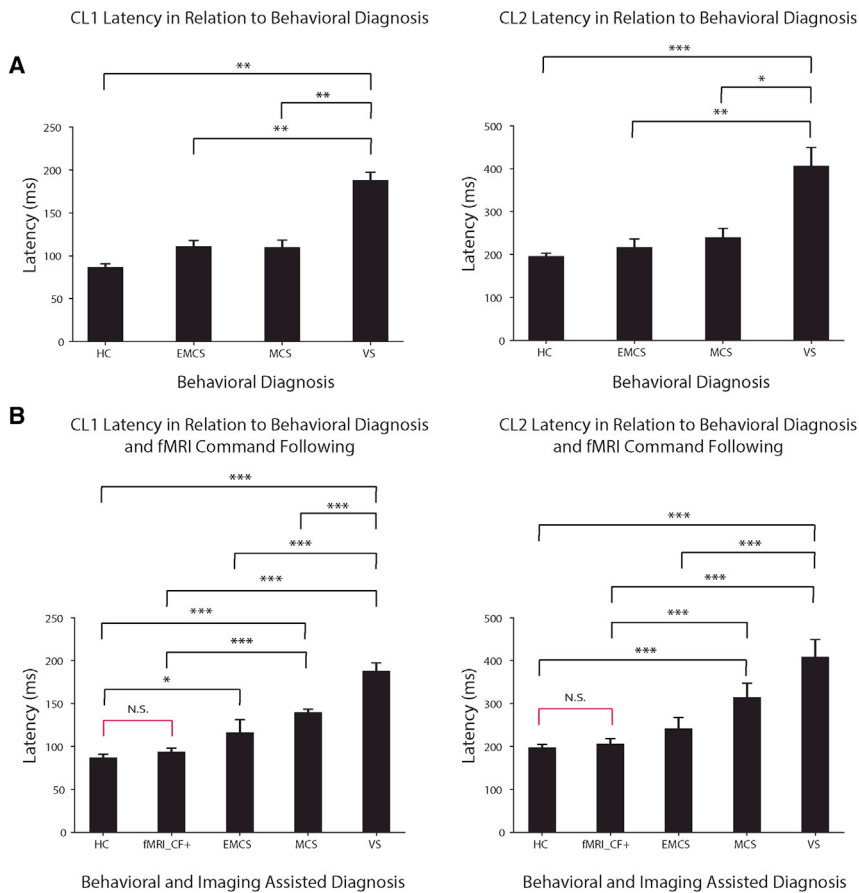


Figure 3. NSE Response Latency in Relation to Behavioral Diagnosis and Imaging-Assisted Diagnosis

(A) The mean and the SEM of the latencies of the CL1 and CL2 components of the NSE responses for the groups of healthy controls (HC), emerged from minimally conscious state patients (EMCS), minimally conscious state patients (MCS), and vegetative state patients (VS) are depicted.

(B) The mean and SEM of the latencies of the CL1 and CL2 components of the NSE responses for the healthy controls (HC) and brain-injured patients reorganized with imaging assisted diagnosis (positive command following in the functional magnetic resonance imaging paradigm; fMRI CF⁺) are depicted. The asterisks denote the significance level of the latency differences of the CL1 and CL2 NSE response components across the patient and healthy control groups (* $p \leq 0.05$, ** $p \leq 0.01$, *** $p \leq 0.001$; N.S., not significant). See also Tables S1 and S2.

measure uniquely allows for an assessment independent of sensory input.

Across the group of 21 patients studied here, behavioral assessments using the CRS-R identified patient diagnostic categories as three VS, 12 MCS, and six EMCS; seven MCS patients and three EMCS patients demonstrated fMRI command-following responses as assessed by the motor imagery paradigm. Recategorizing based on fMRI CF⁺ thus resulted in ten fMRI CF⁺ patients, including three EMCS patients, and seven MCS patients. One EMCS patient communicated with an external augmentative communication device; the other two spoke fluently. The seven fMRI CF⁺ MCS patients ranged in diagnosis from MCS⁻, showing no command-following responses to MCS⁺, with clear demonstrations of command following on their best CRS-R evaluation, although some patients showed fluctuations across these categories on different examinations [44]. Of the total ten fMRI CF⁺ patients included in this study, the original diagnoses in the medical record from their outside assessments included five VS, two MCS, and three EMCS patients.

Our findings support the inference that fMRI CF⁺ responses identify patients with more preserved cerebral function than is typically present in VS and MCS patients. The results of prior studies suggest that motoric impairment masks cognitive function in fMRI CF⁺ patients. In the first cohort study of fMRI mental imagery in VS and MCS patients, Monti et al. only identified one MCS patient out of 31 with fMRI CF⁺ responses and this subject only showed visual tracking early on (1.3 months) after traumatic

brain injury [2]. However, four out of 23 patients in the Monti et al. study initially diagnosed as in VS showed fMRI CF⁺ responses. Thus, all of the initial fMRI CF⁺ patients reported in this cohort had no motor responses that could provide a communication channel. Other studies show that even with an inconsistent communication channel, fMRI CF⁺ patients preserve a greater degree of normal integrative brain physiology. Forgacs et al.

identified four of 44 DOC patients with limited overt behavioral responsiveness with positive fMRI CF⁺ responses; all of these subjects demonstrated preserved wakeful and sleep EEG architecture and retained a preserved glucose metabolism as measured by ¹⁸FDG-PET [6].

Videos S1, S2, S3, S4, and S5 illustrate the three-dimensional brain anatomy and pattern of cerebral metabolism for five fMRI CF⁺ subjects shown in Figure 4. The full sequences of 3D structural MRI images reveal that the fMRI CF⁺ patients demonstrate a wide heterogeneity of injury patterns. Importantly, marked structural injuries to bilateral brainstem and thalamic regions as well as evidence of significant lesions within the dominant language hemisphere are observed. These observations underscore the relative simplicity of the NSE measure in identifying the integrity of auditory processing. Despite these differences in patterns of structural injuries, the overall profile of cerebral metabolism in each fMRI CF⁺ patient subject reveals a relative preservation of cortical metabolism in both hemispheres (FDG-PET images are scaled from 0 to 9 in SUV units), which is consistent with prior reports [6]. Taken together with the present NSE findings, these results support the identification of fMRI CF⁺ as a marker for a distinct subpopulation of patients. Such patients with no or minimal behavioral responsiveness (consistent with coma, VS, or MCS⁻) and covert evidence of command following (established by fMRI, electrophysiological, or other modalities) may be characterized using the term “cognitive motor dissociation” (CMD) [26].

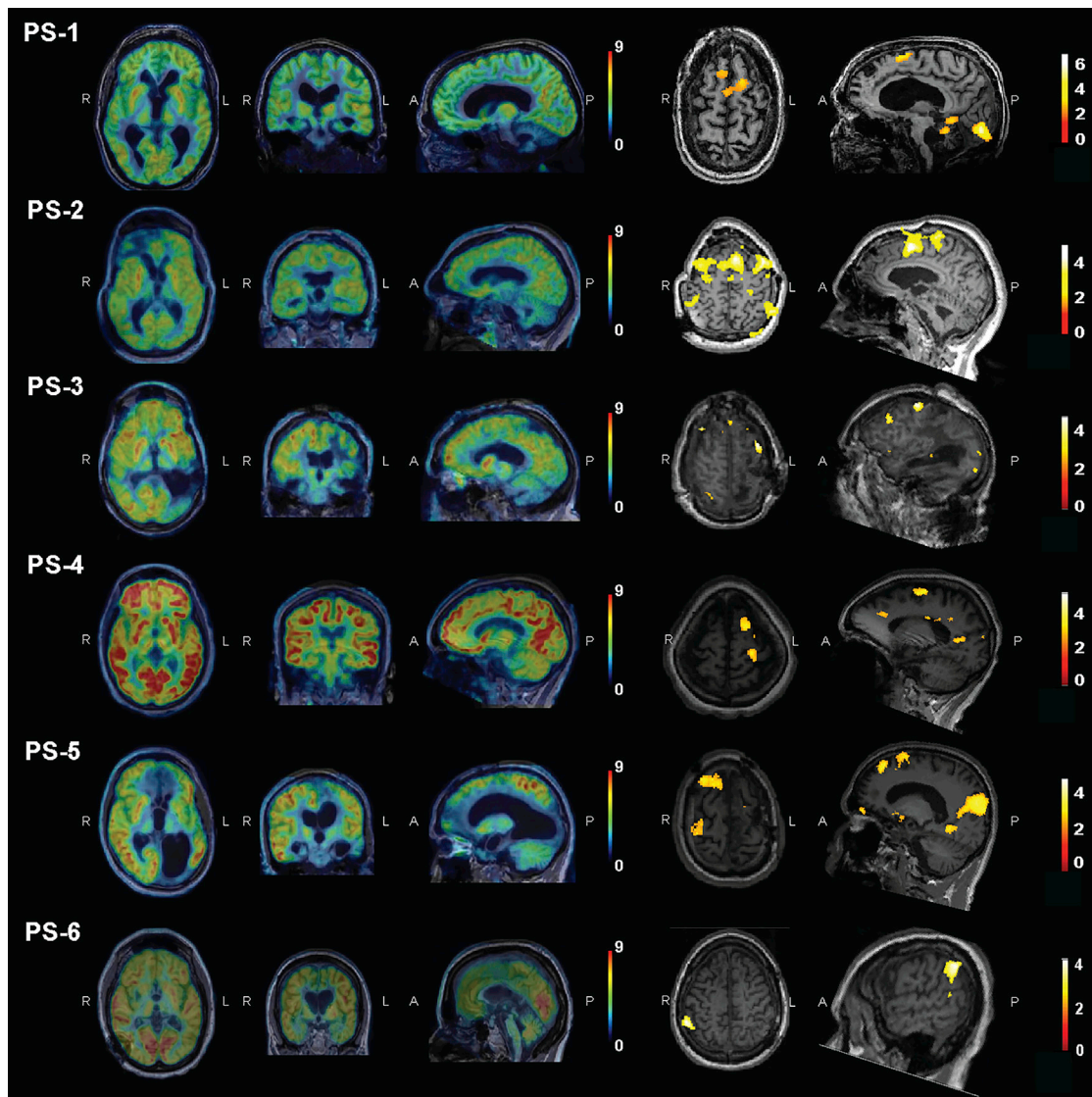


Figure 4. Neuroimaging Profile of the Patients with fMRI Evidence of Command Following

Clinical qualitative characterization of patients with the ^{18}F -fluorodeoxyglucose positron emission tomography (^{18}F -FDG-PET) measurements of the resting state metabolic activity in the fMRI command-following patients are depicted on the left. The fMRI BOLD activation in the motor imagery task as compared to the resting state condition is depicted on the right ($p < 0.005$). A, anterior; L, left; P, posterior; R, right. See also [Table S3](#) and [Videos S1, S2, S3, S4, and S5](#).

There are several limitations to the NSE method and its translation to clinical practice. In our study, we utilized personalized narratives that were recorded by the patient's family members; prior studies have demonstrated that personal and meaningful stimuli elicit more robust and reliable auditory responses in brain-injured patients [45]. However, acquiring personalized narratives imposes an additional time constraint relative to the use of standardized stimuli. Similarly, the use of a standard narrative for the healthy control subjects may influence the saliency and level of attention allocated in comparison to narratives provided by family members that are personally meaningful. Future adaptations of these methods could surmount this limitation by developing real-time methods to track the auditory speech envelopes present in the ambient environment. A further important limitation of studies in severely brain-injured patients is the effect of

fluctuations in arousal, responsiveness, or motivation [5]. Adaptation of the present methods to allow for on-line continuous computation of the NSE would allow for greater ease in identifying brain states with more preserved language processing and patient engagement.

Future studies are needed to validate the strict correlation of fMRI CF^+ responses with normal latency NSE components, but the present data support the consistency of this relationship. The correlation of normal latency NSE response components with fMRI CF^+ shows the utility of this passive paradigm to potentially index higher-level cortical processing and grade the level of cerebral function. Moreover, an electroencephalographic approach is cost effective and efficient and may be adapted for continuous tracking of recovery over time. Once identified, patients with evidence of command-following activity can be tested

to determine whether they can modulate the NSE response with attention to speech stimuli to guide auditory brain-computer interfaces to restore communication and reveal the fullness of their consciousness [46].

STAR★METHODS

Detailed methods are provided in the online version of this paper and include the following:

- KEY RESOURCES TABLE
- CONTACT FOR REAGENT AND RESOURCE SHARING
- EXPERIMENTAL MODEL AND SUBJECT DETAILS
 - Participants
- METHOD DETAILS
 - Behavioral Assessment
 - Task and Stimuli
 - EEG Data Acquisition
 - fMRI Motor Imagery Paradigm
 - NSE-EEG Cross-Correlation Analysis
- QUANTIFICATION AND STATISTICAL ANALYSIS
- DATA AND SOFTWARE AVAILABILITY

SUPPLEMENTAL INFORMATION

Supplemental Information includes three tables and five videos and can be found with this article online at <https://doi.org/10.1016/j.cub.2018.10.057>.

ACKNOWLEDGMENTS

This work was supported by a National Science Foundation Graduate Research Fellowship to C.S.R., a National Institutes of Health T32 pre-doctoral training grant to C.B., the National Institutes of Health NICHD (HD51912), the James S. McDonnell Foundation, the Jerold B. Katz Foundation, and the Weill Cornell Center for Translational Sciences.

AUTHOR CONTRIBUTIONS

C.B. designed the research, collected EEG data, analyzed and interpreted the data, and prepared and revised the manuscript. C.S.R. revised the manuscript. M.M.C. designed the research, collected EEG data, and revised the manuscript. E.A.F. and H.U.V. acquired, analyzed, and interpreted fMRI and PET data. T.R. prepared and revised the manuscript. N.D.S. designed the research, analyzed and interpreted the data, prepared and revised the manuscript, and supervised the study.

DECLARATION OF INTERESTS

C.B., C.S.R., and N.S. have submitted a patent that relates to this work. The authors declare that there are no other conflicts of interest.

Received: April 12, 2018

Revised: August 27, 2018

Accepted: October 28, 2018

Published: November 21, 2018

REFERENCES

1. Owen, A.M., Coleman, M.R., Boly, M., Davis, M.H., Laureys, S., and Pickard, J.D. (2006). Detecting awareness in the vegetative state. *Science* *313*, 1402.
2. Monti, M.M., Vanhaudenhuyse, A., Coleman, M.R., Boly, M., Pickard, J.D., Tshibanda, L., Owen, A.M., and Laureys, S. (2010). Willful modulation of brain activity in disorders of consciousness. *N. Engl. J. Med.* *362*, 579–589.
3. Bardin, J.C., Fins, J.J., Katz, D.I., Hersh, J., Heier, L.A., Tabelow, K., Dyke, J.P., Ballon, D.J., Schiff, N.D., and Voss, H.U. (2011). Dissociations between behavioural and functional magnetic resonance imaging-based evaluations of cognitive function after brain injury. *Brain* *134*, 769–782.
4. Goldfine, A.M., Victor, J.D., Conte, M.M., Bardin, J.C., and Schiff, N.D. (2011). Determination of awareness in patients with severe brain injury using EEG power spectral analysis. *Clin. Neurophysiol.* *122*, 2157–2168.
5. Curley, W.H., Forgacs, P.B., Voss, H.U., Conte, M.M., and Schiff, N.D. (2018). Characterization of EEG signals revealing covert cognition in the injured brain. *Brain* *141*, 1404–1421.
6. Forgacs, P.B., Conte, M.M., Fridman, E.A., Voss, H.U., Victor, J.D., and Schiff, N.D. (2014). Preservation of electroencephalographic organization in patients with impaired consciousness and imaging-based evidence of command-following. *Ann. Neurol.* *76*, 869–879.
7. Abrams, D.A., Nicol, T., Zecker, S., and Kraus, N. (2008). Right-hemisphere auditory cortex is dominant for coding syllable patterns in speech. *J. Neurosci.* *28*, 3958–3965.
8. Abrams, D.A., Nicol, T., Zecker, S., and Kraus, N. (2009). Abnormal cortical processing of the syllable rate of speech in poor readers. *J. Neurosci.* *29*, 7686–7693.
9. Aiken, S.J., and Picton, T.W. (2008). Human cortical responses to the speech envelope. *Ear Hear.* *29*, 139–157.
10. Hertrich, I., Dietrich, S., Trouvain, J., Moos, A., and Ackermann, H. (2012). Magnetic brain activity phase-locked to the envelope, the syllable onsets, and the fundamental frequency of a perceived speech signal. *Psychophysiology* *49*, 322–334.
11. Horton, C., D'Zmura, M., and Srinivasan, R. (2011). EEG reveals divergent paths for speech envelopes during selective attention. *Int. J. Bioelectromagn.* *13*, 217–222.
12. Horton, C., D'Zmura, M., and Srinivasan, R. (2013). Suppression of competing speech through entrainment of cortical oscillations. *J. Neurophysiol.* *109*, 3082–3093.
13. Lalor, E.C., and Foxe, J.J. (2010). Neural responses to uninterrupted natural speech can be extracted with precise temporal resolution. *Eur. J. Neurosci.* *31*, 189–193.
14. Peelle, J.E., Gross, J., and Davis, M.H. (2013). Phase-locked responses to speech in human auditory cortex are enhanced during comprehension. *Cereb. Cortex* *23*, 1378–1387.
15. Power, A.J., Lalor, E.C., and Reilly, R.B. (2011). Endogenous auditory spatial attention modulates obligatory sensory activity in auditory cortex. *Cereb. Cortex* *21*, 1223–1230.
16. Di Liberto, G.M., O'Sullivan, J.A., and Lalor, E.C. (2015). Low-frequency cortical entrainment to speech reflects phoneme-level processing. *Curr. Biol.* *25*, 2457–2465.
17. Ding, N., and Simon, J.Z. (2013). Adaptive temporal encoding leads to a background-insensitive cortical representation of speech. *J. Neurosci.* *33*, 5728–5735.
18. Giraud, A.-L., and Poeppel, D. (2012). Cortical oscillations and speech processing: emerging computational principles and operations. *Nat. Neurosci.* *15*, 511–517.
19. Mesgarani, N., and Chang, E.F. (2012). Selective cortical representation of attended speaker in multi-talker speech perception. *Nature* *485*, 233–236.
20. Riecke, L., Formisano, E., Sorger, B., Başkent, D., and Gaudrain, E. (2018). Neural entrainment to speech modulates speech intelligibility. *Curr. Biol.* *28*, 161–169.e5.
21. Thwaites, A., Nimmo-Smith, I., Fonteneau, E., Patterson, R.D., Buttery, P., and Marslen-Wilson, W.D. (2015). Tracking cortical entrainment in neural activity: auditory processes in human temporal cortex. *Front. Comput. Neurosci.* *9*, 5.
22. Vanthornhout, J., Decruy, L., Wouters, J., Simon, J.Z., and Francart, T. (2018). Speech intelligibility predicted from neural entrainment of the speech envelope. *J. Assoc. Res. Otolaryngol.* *19*, 181–191.

23. Binder, M., Górska, U., and Griskova-Bulanova, I. (2017). 40Hz auditory steady-state responses in patients with disorders of consciousness: correlation between phase-locking index and Coma Recovery Scale-Revised score. *Clin. Neurophysiol.* *128*, 799–806.
24. Boly, M., Faymonville, M.-E., Peigneux, P., Lambertont, B., Damas, P., Del Fiore, G., Degueldre, C., Franck, G., Luxen, A., Lamy, M., et al. (2004). Auditory processing in severely brain injured patients: differences between the minimally conscious state and the persistent vegetative state. *Arch. Neurol.* *61*, 233–238.
25. Perrin, F., Schnakers, C., Schabus, M., Degueldre, C., Goldman, S., Brédart, S., Faymonville, M.-E., Lamy, M., Moonen, G., Luxen, A., et al. (2006). Brain response to one's own name in vegetative state, minimally conscious state, and locked-in syndrome. *Arch. Neurol.* *63*, 562–569.
26. Schiff, N.D. (2015). Cognitive motor dissociation following severe brain injuries. *JAMA Neurol.* *72*, 1413–1415.
27. Stender, J., Mortensen, K.N., Thibaut, A., Darkner, S., Laureys, S., Gjedde, A., and Kupers, R. (2016). The minimal energetic requirement of sustained awareness after brain injury. *Curr. Biol.* *26*, 1494–1499.
28. Edlow, B.L., Chatelle, C., Spencer, C.A., Chu, C.J., Bodien, Y.G., O'Connor, K.L., Hirschberg, R.E., Hochberg, L.R., Giacino, J.T., Rosenthal, E.S., and Wu, O. (2017). Early detection of consciousness in patients with acute severe traumatic brain injury. *Brain* *140*, 2399–2414.
29. Daltrozzo, J., Wioland, N., Mutschler, V., and Kotchoubey, B. (2007). Predicting coma and other low responsive patients outcome using event-related brain potentials: a meta-analysis. *Clin. Neurophysiol.* *118*, 606–614.
30. Fischer, C., Morlet, D., Bouchet, P., Luaute, J., Jourdan, C., and Salord, F. (1999). Mismatch negativity and late auditory evoked potentials in comatose patients. *Clin. Neurophysiol.* *110*, 1601–1610.
31. Kane, N.M., Curry, S.H., Rowlands, C.A., Manara, A.R., Lewis, T., Moss, T., Cummins, B.H., and Butler, S.R. (1996). Event-related potentials-neurophysiological tools for predicting emergence and early outcome from traumatic coma. *Intensive Care Med.* *22*, 39–46.
32. Fischer, C., and Luaute, J. (2005). Evoked potentials for the prediction of vegetative state in the acute stage of coma. *Neuropsychol. Rehabil.* *15*, 372–380.
33. Naccache, L., Puybasset, L., Gaillard, R., Serve, E., and Willer, J.-C. (2005). Auditory mismatch negativity is a good predictor of awakening in comatose patients: a fast and reliable procedure. *Clin. Neurophysiol.* *116*, 988–989.
34. Kotchoubey, B., Lang, S., Mezger, G., Schmalohr, D., Schneck, M., Semmler, A., Bostanov, V., and Birbaumer, N. (2005). Information processing in severe disorders of consciousness: vegetative state and minimally conscious state. *Clin. Neurophysiol.* *116*, 2441–2453.
35. Qin, P., Di, H., Yan, X., Yu, S., Yu, D., Laureys, S., and Weng, X. (2008). Mismatch negativity to the patient's own name in chronic disorders of consciousness. *Neurosci. Lett.* *448*, 24–28.
36. Signorino, M., D'Acunto, S., Angeleri, F., and Pietropaoli, P. (1995). Eliciting P300 in comatose patients. *Lancet* *345*, 255–256.
37. Holeckova, I., Fischer, C., Giard, M.-H., Delpuech, C., and Morlet, D. (2006). Brain responses to a subject's own name uttered by a familiar voice. *Brain Res.* *1082*, 142–152.
38. Münte, T.F., and Heinze, H.-J. (1994). ERP negativities during syntactic processing of written words. In *Cognitive Electrophysiology*, H.J. Heinze, T.F. Münte, and G.R. Mangun, eds. (Birkhäuser), pp. 211–238.
39. Mazzini, L., Zaccala, M., Gareri, F., Giordano, A., and Angelino, E. (2001). Long-latency auditory-evoked potentials in severe traumatic brain injury. *Arch. Phys. Med. Rehabil.* *82*, 57–65.
40. Risetti, M., Formisano, R., Toppi, J., Quitadamo, L.R., Bianchi, L., Astolfi, L., Cincotti, F., and Mattia, D. (2013). On ERPs detection in disorders of consciousness rehabilitation. *Front. Hum. Neurosci.* *7*, 775.
41. Schnakers, C., Perrin, F., Schabus, M., Majerus, S., Ledoux, D., Damas, P., Boly, M., Vanhauzenhuyse, A., Bruno, M.-A., Moonen, G., and Laureys, S. (2008). Voluntary brain processing in disorders of consciousness. *Neurology* *71*, 1614–1620.
42. Casali, A.G., Gosseries, O., Rosanova, M., Boly, M., Sarasso, S., Casali, K.R., Casarotto, S., Bruno, M.-A., Laureys, S., Tononi, G., and Massimini, M. (2013). A theoretically based index of consciousness independent of sensory processing and behavior. *Sci. Transl. Med.* *5*, 198ra105.
43. Casarotto, S., Rosanova, M., Gosseries, O., Boly, M., Massimini, M., and Sarasso, S. (2016). Exploring the Neurophysiological Correlates of Loss and Recovery of Consciousness: Perturbational Complexity. In *Brain Function and Responsiveness in Disorders of Consciousness*, M.M. Monti, and W.G. Sannita, eds. (Springer), pp. 93–104.
44. Bruno, M.-A., Majerus, S., Boly, M., Vanhauzenhuyse, A., Schnakers, C., Gosseries, O., Boveroux, P., Kirsch, M., Demertzi, A., Bernard, C., et al. (2012). Functional neuroanatomy underlying the clinical subcategorization of minimally conscious state patients. *J. Neurol.* *259*, 1087–1098.
45. Perrin, F., Castro, M., Tillmann, B., and Luaute, J. (2015). Promoting the use of personally relevant stimuli for investigating patients with disorders of consciousness. *Front. Psychol.* *6*, 1102.
46. Horton, C., Srinivasan, R., and D'Zmura, M. (2014). Envelope responses in single-trial EEG indicate attended speaker in a 'cocktail party'. *J. Neural Eng.* *11*, 046015.
47. Giacino, J.T., Kalmar, K., and Whyte, J. (2004). The JFK Coma Recovery Scale-Revised: measurement characteristics and diagnostic utility. *Arch. Phys. Med. Rehabil.* *85*, 2020–2029.
48. Schiff, N.D., Rodriguez-Moreno, D., Kamal, A., Kim, K.H., Giacino, J.T., Plum, F., and Hirsch, J. (2005). fMRI reveals large-scale network activation in minimally conscious patients. *Neurology* *64*, 514–523.
49. Hirsch, J., Ruge, M., Kim, K., Correa, D., Victor, J., Relkin, N., Labar, D., Krol, G., Bilsky, M., and Souweidane, M. (2000). An integrated functional magnetic resonance imaging procedure for preoperative mapping of cortical areas associated with tactile, motor, language, and visual functions. *Neurosurgery* *47*, 711–721.
50. Souweidane, M.M., Kim, K.H., McDowall, R., Ruge, M.I., Lis, E., Krol, G., and Hirsch, J. (1999). Brain mapping in sedated infants and young children with passive-functional magnetic resonance imaging. *Pediatr. Neurosurg.* *30*, 86–92.
51. Rodriguez Moreno, D., Schiff, N.D., Giacino, J., Kalmar, K., and Hirsch, J. (2010). A network approach to assessing cognition in disorders of consciousness. *Neurology* *75*, 1871–1878.
52. Penny, W.D., Friston, K.J., Ashburner, J.T., Kiebel, S.J., and Nichols, T.E. (2011). *Statistical Parametric Mapping: The Analysis of Functional Brain Images* (Elsevier).
53. Mazziotta, J., Toga, A., Evans, A., Fox, P., Lancaster, J., Zilles, K., Woods, R., Paus, T., Simpson, G., Pike, B., et al. (2001). A probabilistic atlas and reference system for the human brain: International Consortium for Brain Mapping (ICBM). *Philos. Trans. R. Soc. Lond. B Biol. Sci.* *356*, 1293–1322.
54. Liu, Y., Shen, H., Zhou, Z., and Hu, D. (2011). Sustained negative BOLD response in human fMRI finger tapping task. *PLoS ONE* *6*, e23839.
55. Allison, J.D., Meador, K.J., Loring, D.W., Figueroa, R.E., and Wright, J.C. (2000). Functional MRI cerebral activation and deactivation during finger movement. *Neurology* *54*, 135–142.
56. Doelling, K.B., Arnal, L.H., Ghitza, O., and Poeppel, D. (2014). Acoustic landmarks drive delta-theta oscillations to enable speech comprehension by facilitating perceptual parsing. *Neuroimage* *85*, 761–768.
57. Fischer, C., Luaute, J., and Morlet, D. (2010). Event-related potentials (MMN and novelty P3) in permanent vegetative or minimally conscious states. *Clin. Neurophysiol.* *121*, 1032–1042.
58. Schorr, B., Schlee, W., Arndt, M., Lulé, D., Kolassa, I.-T., Lopez-Rolon, A., and Bender, A. (2015). Stability of auditory event-related potentials in coma research. *J. Neurol.* *262*, 307–315.
59. Benjamini, Y., and Yekutieli, D. (2001). The control of the false discovery rate in multiple testing under dependency. *Ann. Stat.* *29*, 1165–1188.

STAR★METHODS

KEY RESOURCES TABLE

REAGENT or RESOURCE	SOURCE	IDENTIFIER
Software and Algorithms		
Cross-correlation algorithm (MATLAB xcorr function)	MathWorks	https://www.mathworks.com/help/signal/ref/xcorr.html
Hilbert transform (MATLAB hilbert function)	MathWorks	https://www.mathworks.com/help/signal/ug/hilbert-transform.html
Butterworth Filter (MATLAB butterworth filter function)	MathWorks	https://www.mathworks.com/help/signal/ref/butter.html
ANOVA Test and Post-hoc tests (SPSS)	IBM	https://www.ibm.com/support/knowledgecenter
EEG data visualization (EEGLAB)	Swartz Center for Computational Neuroscience	https://sccn.ucsd.edu/eeglab/index.php

CONTACT FOR REAGENT AND RESOURCE SHARING

Further information and requests for resources and reagents should be directed to and will be fulfilled by the Lead Contact, Nicholas D. Schiff (nds2001@med.cornell.edu).

EXPERIMENTAL MODEL AND SUBJECT DETAILS

Participants

The study participants included thirteen healthy controls with no history of neurological disorder or auditory impairment and twenty-one severely brain-injured patients. This subset of the data was described in detail by Curley and colleagues [5]. Behavioral assessments diagnosed six of the brain-injured patients as emerged from minimally conscious state (EMCS), twelve in a minimally conscious state (MCS), and three in vegetative state (VS). The healthy control and patient demographic information are summarized in Table S1. Healthy controls and brain-injured patients were admitted to The Rockefeller University Hospital (RUH) for the duration of the study. Informed consent was obtained directly from the healthy controls and from patients' legally authorized representatives. The study was approved by RUH and the Weill Cornell Medicine Institutional Review Boards.

METHOD DETAILS

Behavioral Assessment

The JFK Coma Recovery Scale – Revised (CRS-R) was used to behaviorally evaluate the DOC patients [47]. This clinical evaluation was conducted at the bedside several times during the patient visit. The CRS-R examines the patient's arousal, communication, auditory, visual, verbal, and motor functions. The behavioral assessment diagnosed the patients as emerged from minimally conscious state (EMCS), minimally conscious state (MCS), or vegetative state (VS). Patients with evidence of command following in the fMRI paradigm were characterized as fMRI CF⁺. The CRS-R was administered typically 3 times and the best CRS-R total score was utilized for the study. The EMCS patients were diagnosed after 2 consecutive assessments consistent with emergence from MCS.

Task and Stimuli

The patients were presented with personally relevant narratives recorded from the patients' surrogates. The personally relevant narratives included recollections and stories about the patient prior to the brain injury. Healthy controls listened to a portion of the novel *Alice's Adventures in Wonderland* by Charles Lutwidge Dodgson. We selected the use of a standardized healthy control narrative to avoid personally relevant content that might introduce greater variability of response across the healthy controls [48–50]. For two patient subjects, the narratives stimuli were either not presented or the EEG recordings were excessively noisy. For these patients, we assessed the neuronal response to the novel *Alice's Adventures in Wonderland*. Natural speech stimuli were approximately 2 min long and the same stimuli were presented approximately four times to subjects binaurally through headphones at a comfortable sound level of approximately 65 dB. We used the Presentation software (Neurobehavioral Systems, Albany CA) and the stimuli were time-locked to the EEG recordings.

EEG Data Acquisition

The EEG was recorded with the XLTEK system at a sampling rate of 250 Hz or 256 Hz (Natus Medical, San Carlos, CA). The impedances were maintained at or below 5 k Ω across each of the 37 collodion-pasted electrodes for the duration of the recordings. The

electrodes were positioned according to the enhanced 10-20 international system and the reference electrode was positioned at FCz. The EEG data were reviewed with the XLTEK NeuroWorks software (Natus Medical, San Carlos, CA), imported into MATLAB (MathWorks, Natick, MA), transformed to the common average reference, and band-pass filtered between 1–90 Hz. One patient subject's EEG was recorded with 21 electrodes referenced to FCz. The EEG recordings were visually inspected for artifacts and excessively noisy trials were rejected from the analysis. We hand selected all EEG segments used for analysis. Each trial was visually inspected to identify and remove artifacts related to eye blinks, eye movements, and myogenic activity prior to segmentation. Trials with continuous artifact throughout the majority of the recordings were discarded.

fMRI Motor Imagery Paradigm

We conducted fMRI studies in the brain-injured patients (each patient tolerated the study and there were no contraindications for MRI imaging). We acquired the fMRI patient data with the GE 3.0 Tesla Signa Excite HDx MRI system (Milwaukee, WI), the Siemens 3.0 Tesla TIM Trio MRI system (Erlangen, Germany), or the Siemens 3.0 Tesla MAGNETOM Prisma MRI system (Erlangen, Germany). The patients were instructed to imagine playing tennis and to imagine and attempt to open and close their right hand [with the exception of scan AD2 in which the motor imagery used was swimming]. For the fMRI tasks, the sampling time was TR = 2 s. In the Tennis command following task: At 0 s, subjects were instructed to 'imagine swinging a tennis racket with your right hand'. At 16 s, subjects were instructed to 'stop imagining swinging a tennis racket'. At 32 s, the task started over. In the right hand command following task: The subjects were instructed to 'keep opening and closing your right hand ... stop opening and closing your right hand'. For both tasks, the sequence was repeated 8 times and the total time duration was 4:16 min. A general linear model was utilized to determine blood-oxygenation-level dependent (BOLD) signal differences between the motor imagery task and resting conditions (significant at $p = 0.05$ with FDR correction). One patient participated in a different fMRI paradigm and the details were published in a separate manuscript [51].

We utilized the SPM12 software (v. 6225) [5, 52] for the correction of motion artifacts, the implementation of slice-timing correction for interleaved acquisition, and the co-registration of the data to the International Consortium for Brain Mapping – Montreal Neurological Institute (ICBM-MNI) standard space EPI [53]. We applied spatial smoothing with an isotropic 8 mm kernel. The GLM was defined with a hemodynamic response function (HRF) that consisted of two Gamma functions. This was convolved with the block design, a first-order autoregressive model (AR(1)) autocorrelation correction, the six motion parameters that were included as the nuisance regressors, and a constant value as the intercept. Visualization of the SPM was carried out with the statistical parametric mapping viewing program *xjview*. A statistical threshold of $p = 0.05$ (FDR-corrected) was applied. One patient initially demonstrated task-negative BOLD responses at the time of the NSE measurements; subsequent follow-up fMRI studies in this patient revealed positive BOLD responses. We classify this subject here as fMRI-CF⁺ based on these later findings; although prior investigations have shown negative BOLD responses in healthy controls in motor-imagery paradigms, negative BOLD signal activation have not been characterized in motor imagery tasks [54, 55].

NSE-EEG Cross-Correlation Analysis

We utilized a cross-correlation approach to investigate the cortical entrainment to the NSEs [9–12]. The cross-correlation between the amplitude envelope of the sound pressure tracing recorded during natural speech and the EEG indicates the delay and strength of the neuronal tracking of the speech envelope. We first extracted the NSE by computing the magnitude of the Hilbert transform and band-pass filtered this signal between 2–30 Hz. The NSE was subsequently down-sampled from 44.1 kHz to 250 Hz to match the EEG sampling frequency. The EEG and NSE from each trial were partitioned into segments of 2.0 s duration. For each segment, the cross-correlation function of the NSE and the EEG signal was computed. We then determined the average cross-correlation function across all segments. For our analysis of these cross-correlation functions, we focused on a time window between 0 and 500 ms. For each subject, we computed the latencies and amplitudes of the maximum correlation magnitude of the first and second components of the individual NSE-EEG cross-correlation functions in defined temporal intervals. We label the first and second components of the NSE response as component latency1 (CL1) and component latency2 (CL2) [9–12].

Many patients have diverse structural injuries that may modulate the strength and the topography of the response. In order to ascertain the strongest auditory evoked response, prior studies have determined the single best channel over the scalp in a predefined region of interest [4, 5, 14, 56–58]. The NSE response is most prominent over the temporal and parietal lobes with sources in the posterior temporal cortices [9, 12]. We defined a region of interest that was composed of the four temporal channels (T3; T4; T5; T6) and their immediate neighboring electrodes. For each subject, we selected the single best EEG channel from this region of interest that had the best-defined NSE response and the greatest correlation magnitude to the NSE. In order to assess the significance of the NSE response, the peak values of the cross-correlation functions were compared with randomized cross-correlation functions that served as a control [9]. The randomized cross-correlation functions were computed by randomly redistributing the values of each cross-correlation segment between the NSE and the EEG across the time points and averaging across the segments. The chance correlation values across the time lags and EEG channels of the control cross-correlation function generated an approximately normal distribution. We computed the mean and standard deviation of the resultant distribution and determined the 95% confidence range of control cross-correlation values. Peak values in the NSE-EEG cross-correlation function that exceeded the 95% confidence interval were deemed statistically significant at $p \leq 0.05$ following FDR multiple comparisons procedure [12, 59].

QUANTIFICATION AND STATISTICAL ANALYSIS

The statistical analysis was performed on the individual averages of the NSE–EEG cross-correlation functions with the SPSS 24 software package (SPSS, Chicago, Illinois). We computed the latency and amplitude of the maximum correlation for the CL1 and CL2 components. One-way ANOVA and Tukey-Kramer post hoc tests were implemented to test for significant differences ($p \leq 0.05$) in the latencies and amplitudes of the NSE response components between the brain-injured patient groups of fMRI CF⁺, EMCS, MCS, and VS patients, and the healthy controls.

DATA AND SOFTWARE AVAILABILITY

Please contact Dr. Chananel Braiman (cb647@cornell.edu) for data and software requests.