

Figure Legends for Supplementary Information

Figure S1

Statistical characteristics of the stimuli. A. Distribution of pixel luminances for the white noise stimulus (black) and the naturalistic stimulus (gray). B. Power spectra of the white noise stimulus (black) and the naturalistic stimulus (dotted). C. Power spectra of the pixels in the dark (solid) and bright (dotted) tails of the luminance distribution of the naturalistic stimulus. Cutoffs for the tails are $1/4$ (left column) and $1/16$ (right column), as diagrammed in the histograms above each column. First row shows the results obtained from the original stimulus; second row shows the results obtained when the original stimulus is averaged over 4 frames and a 4×4 spatial block of checks prior to applying the threshold. There is little evidence of an asymmetry in the temporal correlation structure of the dark and bright regions of the stimulus.

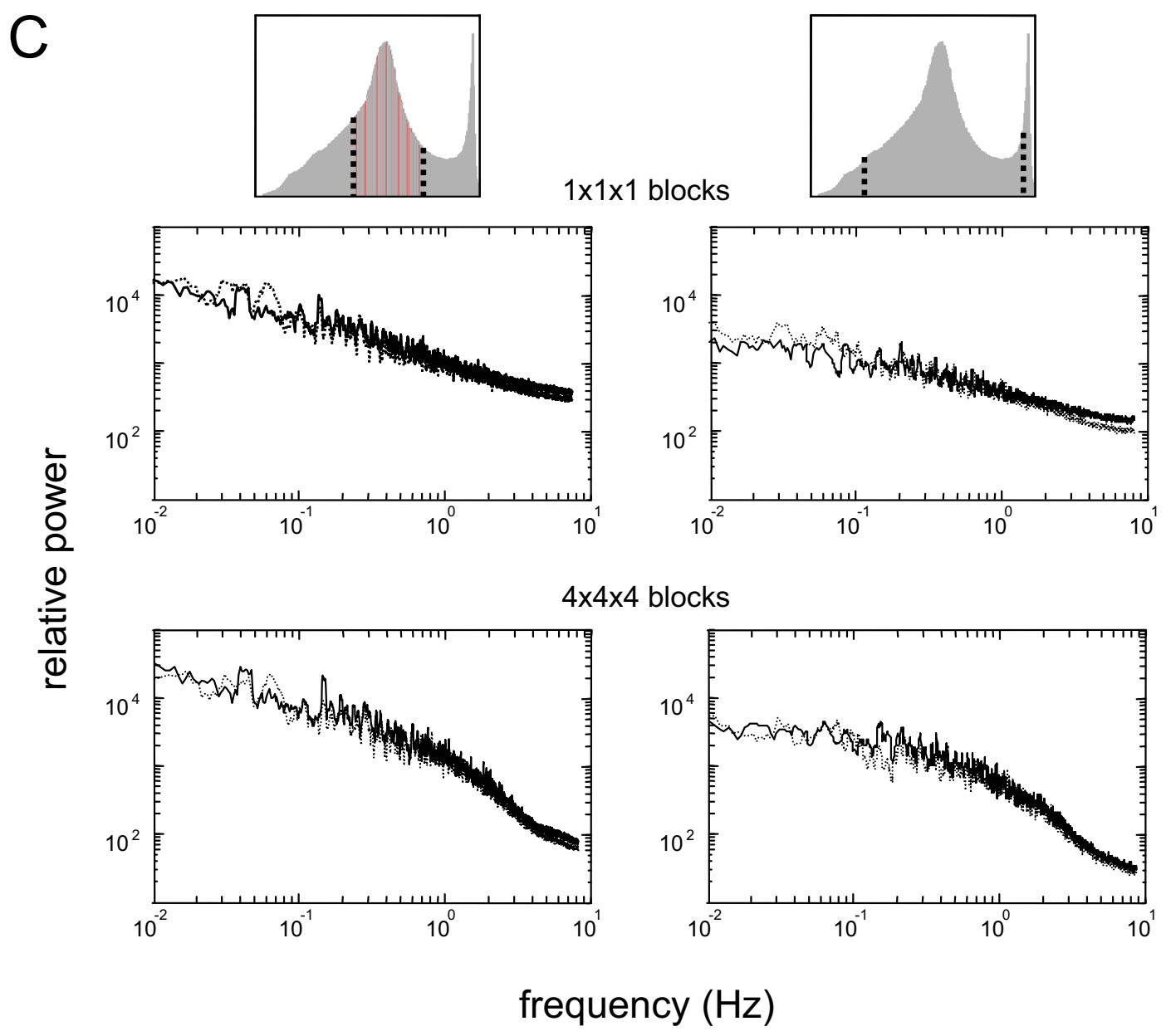
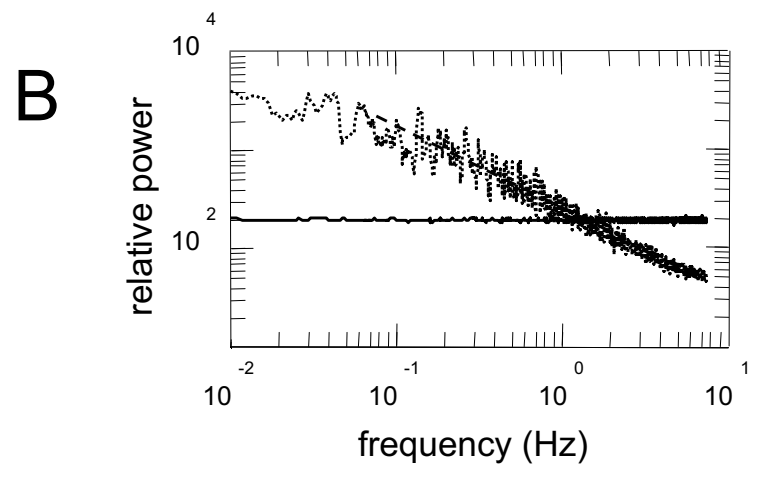
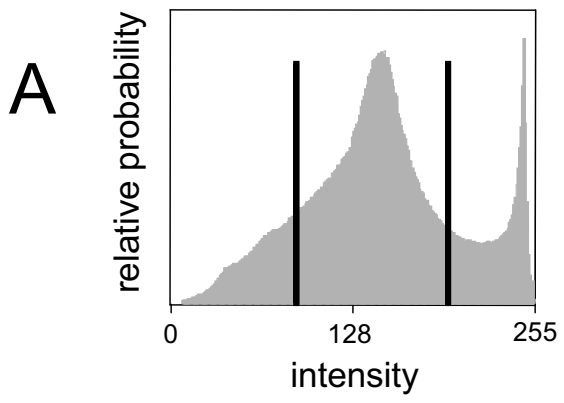


Figure S1